

POLE
P6189880

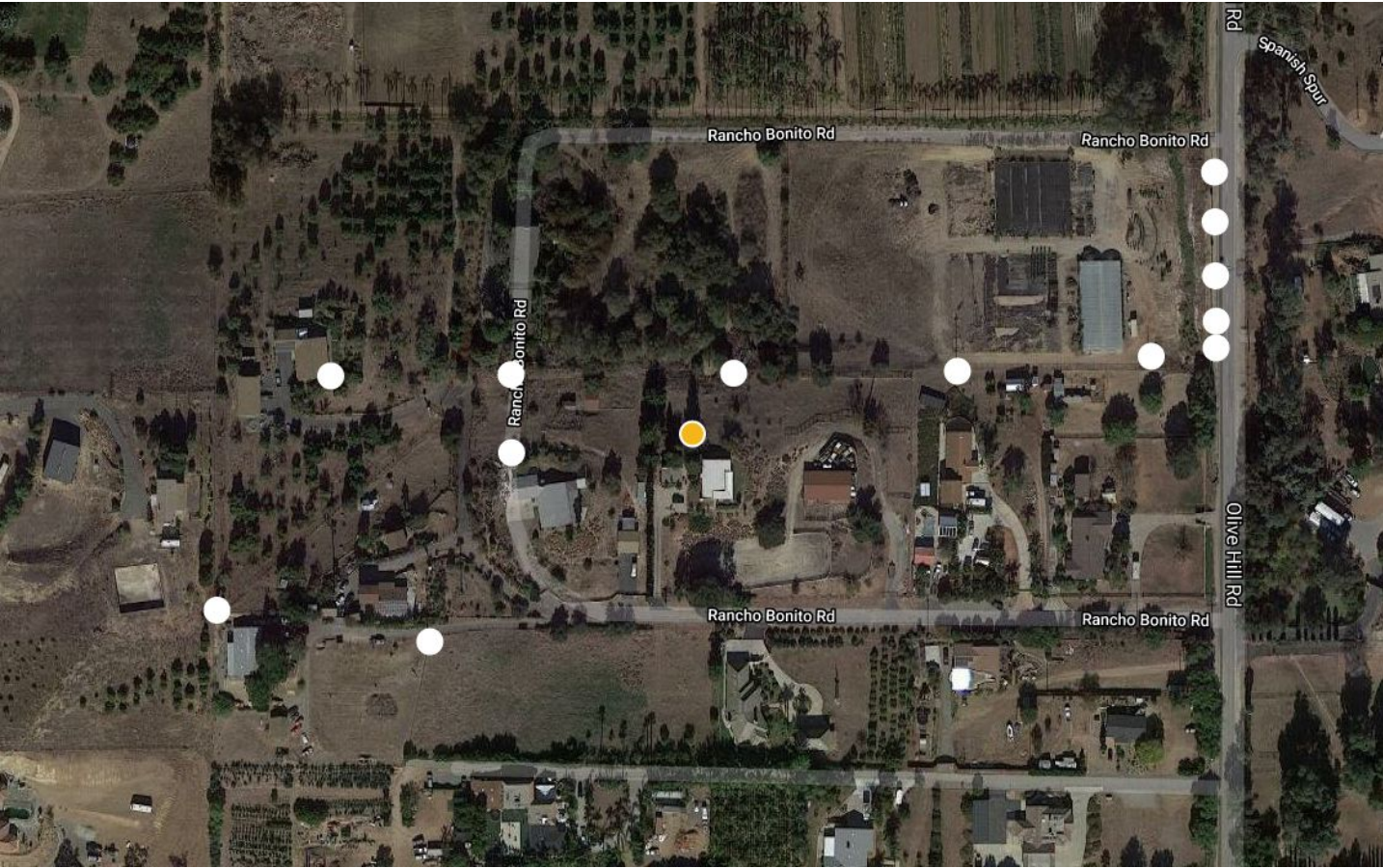
APPROVED
29 Dec 2021

[VIEW ORDER](#)

[VIEW ASSET](#)

LOCATION

Latitude	33.3180782806	Longitude	-117.25154933
----------	---------------	-----------	---------------



ATTRIBUTES

Area	231
Material	WOOD

STRUCTURE



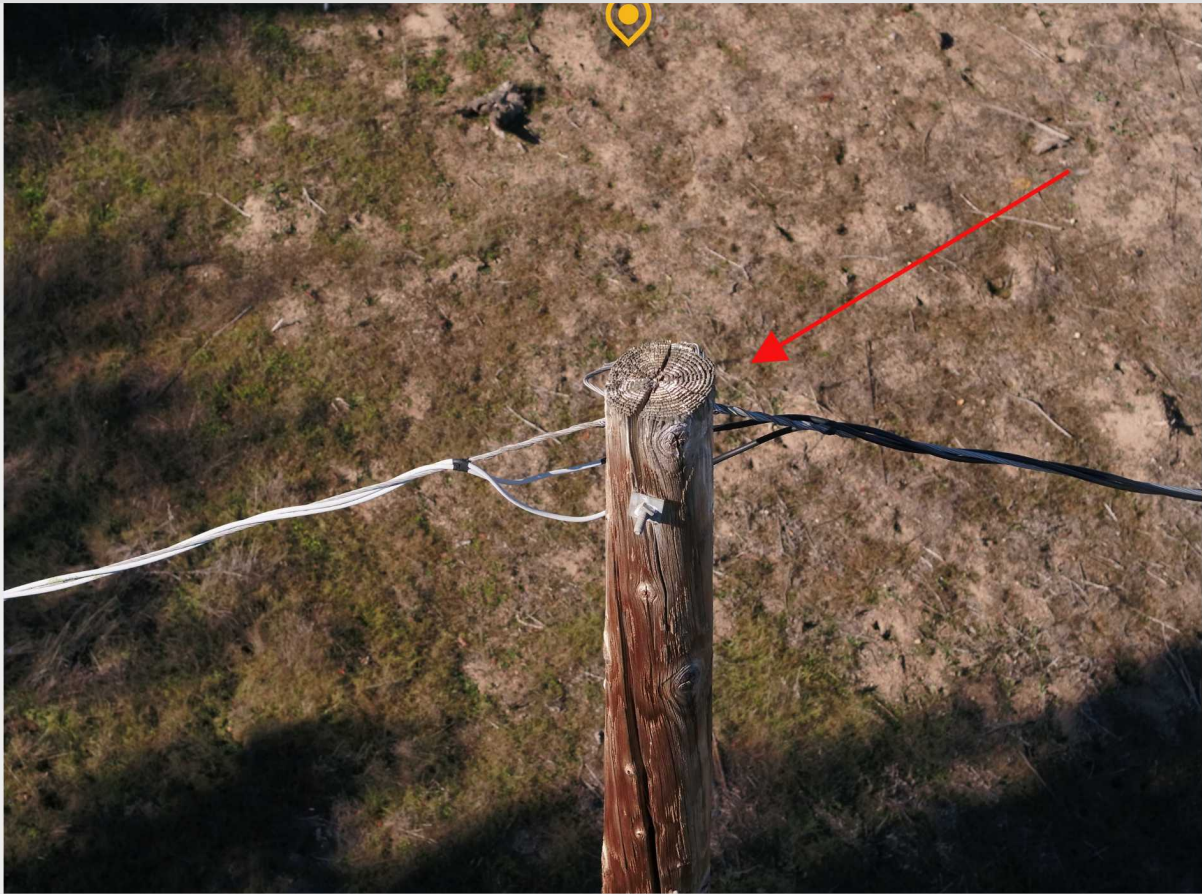
POLE

ISSUE ID

VIEW ISSUE

P6189880

246 SDG&E Pole/Stub Pole Damaged or Broken



DETAILS

Priority	Non-critical	Inspector	ewilson+t2@hilination.net
Date	27 Dec 2021	Party To Advise	Engineering team

DESCRIPTION

Damaged pole - Repairable?